

Every Child a Writer Evidence 2009

Every Child a Writer, a Colorado-based school-wide model of writing instruction, has been implemented in Colorado schools since the year 2000. This report documents the model's evidence of instructional efficacy as measured by the Colorado Student Assessment Program (CSAP).

Northridge Elementary School is located in Highlands Ranch, a suburb south of metropolitan Denver. Across six years of implementation, the overall percentage of students receiving proficient or advanced scores on CSAP Writing improved from 74% to 90% (figure 1). The percentage of students achieving advanced proficient status increased from 21% in 2003 to 34% in 2009 (figure 2).

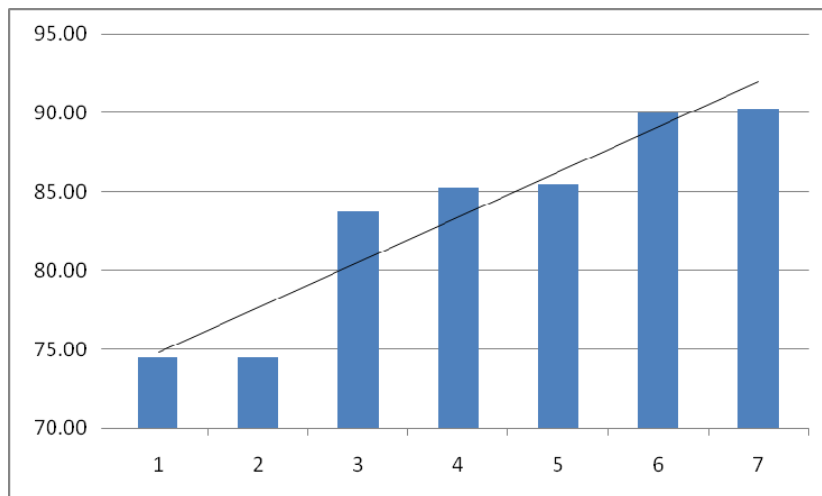


Figure 1. Northridge Elementary School CSAP Writing Percent Proficient and Advanced 2003-2009.

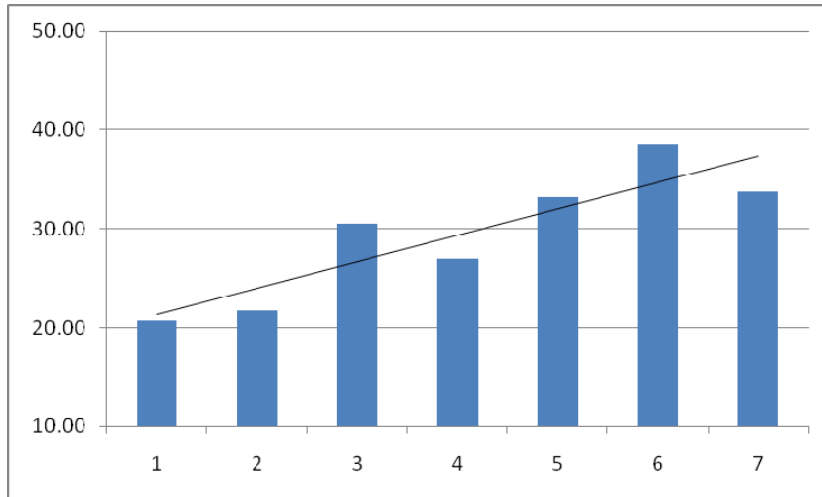


Figure 2. Northridge Elementary School CSAP Writing Percent Advanced Proficient 2003-2009.

Multiple schools in the Douglas County School District also demonstrated CSAP gains (figure 3) including Rock Ridge Elementary (4% gain overall; advanced proficient rose from 7% to 9%), Cherokee Trail Elementary (5% gain overall; advanced proficient rose from 7% to 12%), Eldorado Elementary (12% gain overall; advanced proficient rose from 12% to 13%), Heritage Elementary (4% overall gain; advanced proficient from 16% to 18%), Iron Horse Elementary (2% overall gain), Pine Lane Primary (12% gain), Pine Lane Intermediate (5% gain overall; advanced proficient rate rose from 9% to 12%), Prairie Crossing Elementary (1% overall gain; from 9% to 13% advanced proficient), Saddle Ranch Elementary (7% overall gain), Sand Creek Elementary (4% overall gain;

1% gain in advanced proficiency), and Timber Trail Elementary (1% overall gain).

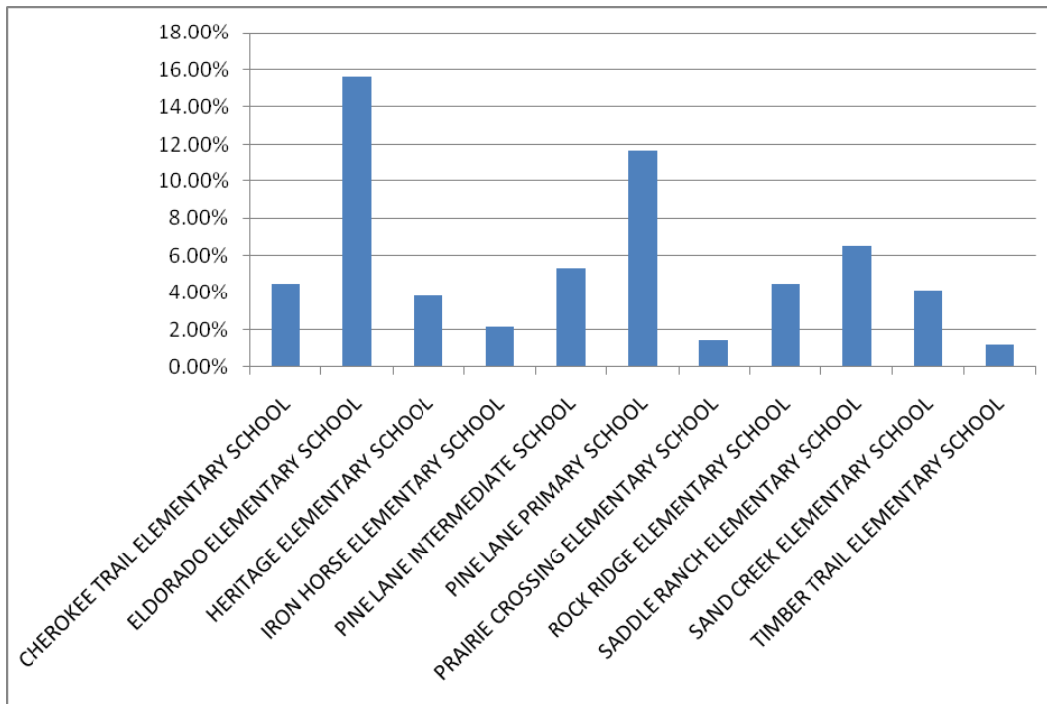


Figure 3. Douglas County Schools 2008-2009 CSAP Writing Percentage Gains

College View Elementary is a high poverty school (88%) located in Denver Public Schools. From 2008 to 2009, the percentage of students scoring proficient and advanced rose from 17% to 20%, a 16% gain.

Students scoring advanced proficient rose from 0% to 5%.

The Boulder Community School for Integrated Studies improved overall proficiency rates from 68% to 84%, a 19% gain.

In Adams County School District 12, Eagleview Elementary and Woodglen Elementary both demonstrated significant gains. Eagleview students improved from 54% proficient and advanced to 59%, a gain of 8%. Woodglen Elementary posted a 13% gain, from 48% of students scoring proficient and advanced to 56% meeting the benchmark.

Thornton Middle School is a high poverty (80%) grades 6-8 school in Adams County. The students demonstrated significant gains across all grade levels in their second year of implementation. Average student proficiency rates across grades 6, 7, and 8 improved by 5.67%, an increase of 22% over the previous year. Students achieving advanced proficient status improved from 0% to 4%.

Euclid Middle School is located in a predominantly middle class community in the Littleton Public School District. Student proficiency rates rose from 62% to 67%, a 7% gain in their first of implementation.

Cotopaxi Junior/Senior High School is a high poverty (58%) school located in south central Colorado. In the first year of implementation, CSAP writing proficiency rose 9%, from 53% to 58% proficient or advanced.

William E. Bishop Elementary is a small, urban, high poverty (82%) school located in Englewood, Colorado. Students achieving proficient or advanced scores on the CSAP rose from 36% to 38% from 2008 to 2009.

Ute Meadows Elementary is located in an upper middle class community in southern Jefferson County. In the school's first year of implementation, the percentage of students achieving proficient or advanced proficient status on CSAP writing rose from 70% to 75%, an increase of 6% over baseline performance rates.